

ACCESSORIES



100-DRV-1010

This driver should be used for installing the following knives: 200-KNF-0861, 200-KNF-0863, 200-KNF-7510, 200-KNF-7511, 200-KNF-7518, 200-KNF-7542, 200-KNF-7520, 200-KNF-7521, 200-KNF-7524, 200-KNF-7525, 200-KNF-7530 and 200-KNF-7531.



100-DRV-1020

This driver is used when installing the 200-HOE-1700 onto the adapter.



200-DRV-1012

This driver should be used for installing the 200-KNF-0813.



200-DRV-1013

This driver should be used when installing knives with the following tips: 200-TIP-2011, 200-TIP-0300, 200-TIP-3001, 200-TIP-3011 and 200-TIP-4011. It should also be used when installing the 200-KNF-0501, 200-KNF-0571 and 200-KNF-0575.



200-DRV-1030

This driver should be used when installing the following openers: 200-KNF-0505, 200-VRT-1000, 200-VRT-1011, 200-VRT-1016, 200-VRT-1061 and 410-VRT-1000. It should also be used when installing knives with the following tips: 200-TIP-0503, 200-TIP-0507, 200-TIP-0523, 200-TIP-0524, 200-TIP-0531 and 200-TIP-1011.



400-DRV-1000

This driver can be used when installing any of the quick change sweeps and spoons.



400-DRV-1010

This driver should be used when installing the following knives: 200-KNF-0810, 200-KNF-0811, 410-KNF-0800 and 410-KNF-0801. It should also be used for installing knives with the following tips: 200-TIP-0800 and 200-TIP-0801.



100-WDG-0700

This 7° urethane wedge is designed to correct the pitch of the 100-QCA-5010 and the 200-QCA-5010 adapters on 43° shanks.



200-WDG-0206

This 2° urethane wedge has 45 mm to 80 mm bolt hole spacing. It is used to obtain proper sweep pitch on certain shanks.



200-WDG-0506

This 5° urethane wedge has 45 mm to 80 mm bolt hole spacing. It is used to obtain proper sweep pitch on certain shanks.



200-WDG-1000

This 10° urethane wedge has 45 mm to 80 mm bolt hole spacing. It is used to obtain proper sweep pitch on certain shanks.



200-WDG-1006

This 10° urethane wedge has 45 mm to 80 mm bolt hole spacing. It is used to obtain proper sweep pitch on certain shanks.



400-WDG-0300

This 3° urethane wedge is designed to correct the pitch of the 410-QCA-5010 adapter on a 47° chisel plow shank, as well as the 50° bolt-on sweeps.



400-WDG-0700

This 7° urethane wedge is designed to correct the pitch of the 410-QCA-5010 adapter when installing on a 43° shank. It should also be used with the 600 Series knives when installing on a 43° shank.



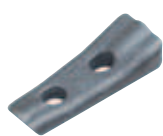
880-WDG-0300

This cast wedge adapter is designed for our 047, 610 and 612 seeding openers on all **John Deere** shanks.



880-WDG-0301

This cast wedge adapter is designed for our 047, 610 and 612 seeding openers on all **47° & 50° curved** bottom shanks.



200-QAS-4711

This sub-plate is used in conjunction with the 200-QCA-4710 adapter on the Kongskilde VFM shank.



200-QAS-4712

This sub-plate is used in conjunction with the 200-QCA-4710 adapter on an S-tine. S-tines with a single hole can now use the Speed-Loc™ system.



100-HAM-4000

This 4 lb (1.8 kg) hammer is ideal for installing all quick change products.



200-REL-1010

The speed-release tool must be used to remove 200 and 410 Series sweeps and openers off the Speed-Loc™ adapters.