



**200-TIP-1011**

**VERTICAL CARBIDE TIP**

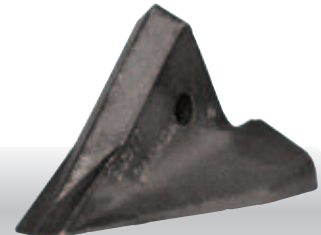
1" (25 mm) vertical tip with double carbide insert. Recommended for rocky and highly abrasive conditions.



**200-TIP-2011**

**CARBIDE SPREAD TIP**

2" (51 mm) tip with carbide insert on the nose to fracture the ground. Carbide inserts on the underside of the wings to maintain a sharp cutting edge.



**200-TIP-3000**

**CHROME SPREAD TIP**

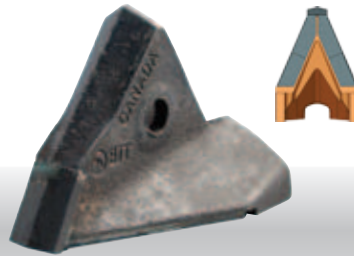
3" (76 mm) tip.



**200-TIP-3001**

**CARBIDE SPREAD TIP**

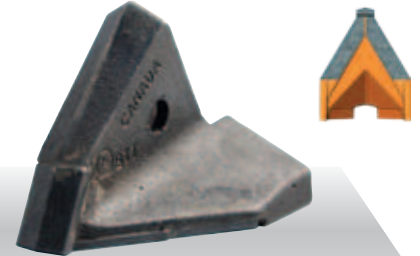
3" (76 mm) tip with carbide insert on the nose and hard facing on the underside of the wings.



**200-TIP-3011**

**CARBIDE SPREAD TIP**

3" (76 mm) tip with carbide insert on the nose to fracture the ground. Carbide inserts on the underside of the wings to maintain a sharp cutting edge.



**200-TIP-4011**

**CARBIDE SPREAD TIP**

4" (102 mm) tip with carbide insert on the nose to fracture the ground. Carbide inserts on the underside of the wings to maintain a sharp cutting edge.



**610-TIP-0802**

**CARBIDE SPREAD TIP**

3/4" (19 mm) long-wearing single shoot tip extra long carbide on the nose for highly abrasive conditions. Used for seeding or fertilizing (not for double shooting). Fits **VOS** (Versatile Opener System).

See pages 60-61 for more details.

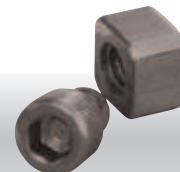


**610-TIP-4030**

**CARBIDE SPREAD TIP**

4" (102 mm) Paired Row tip with extra long carbide on the nose and narrow carbide on the cutting edges of the wings for excellent penetration. Two carbide pieces on the bottom firm the trench for seed placement. Fits **VOS** (Versatile Opener System). See pages 60-61 for more details.

This tip also fits any holders that use the Paired Row tip **610-TIP-4041**.



**200-BNC-3100**

**BOLT & NUT COMBO**

It is important not to over tighten the bolt. The bolt should be turned in by hand until the shoulder of the bolt makes contact with the nut before torquing to 84 in/lbs or 7 ft/lbs. It is recommended the bolt and nut be changed when changing the tip.

**Over torquing will result in difficulty when removing.**