



<p>L DOUBLE SHOOT Liquid N</p> <p>682-ASY-2063 682-ASY-2064</p>	<p>L P TRIPLE SHOOT Liquid N + Liquid Phos</p> <p>682-ASY-2063P 682-ASY-2064P</p>	<p>M DOUBLE SHOOT Pressurized NH₃*</p> <p>682-ASY-2063M 682-ASY-2064M</p>
--	--	---

THESE SIDE BAND OPENERS FIT: BOURGAULT PHD

*For Pressurized NH₃ please see your pressurized system dealer for more information on tube sizing and inserts.

- The 2-1/4" (57 mm) Side Band tip provides you with low draft and soil disturbance while ensuring great seed placement.
- Long-wearing carbide-enforced chrome tip is reinforced where you need it – on the nose and wing.
- Carbide placement provides sharp cutting edges for excellent penetration.
- The welded liquid tube is protected by the carbide tip and runs along the front of the opener to prevent plugging.
- Also available in Triple Shoot Pressurized NH₃ + Liquid Phos **682-ASY-2063MP** and **682-ASY-2064MP**. These openers are fitted with a 1/4" (6 mm) stainless steel tube that applies the liquid phos down the center of the seed row.
- The streamlined holder design reduces plugging and allows for better trash clearance.

Installation Note: When installing on a Bourgaault PHD use bolt holes pictured in Fig. 1.

ALL WINGS ON SIDE BAND OPENERS MUST BE POINTING INWARD TO THE CENTER OF THE SEEDING UNIT TO PREVENT PLUGGING WHEN TURNING. CUSTOMER MUST ORDER HALF LEFT AND HALF RIGHT WING OPENERS.

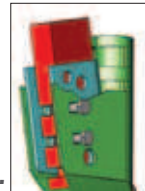


Fig. 1

For a more detailed view of these openers see page 132.

Looking for C-Shank Openers?

Refer to our C-Shank Section on pages 24-29.